

※ ISMM2080, ISMM1468 SERIES

Suitable for manual pulse input type such as NC or milling machinery

High reliability, terminal connection type

Power supply: 5V DC, 12V DC

Customer's logo is available

Application:

Industrial tooling machinery

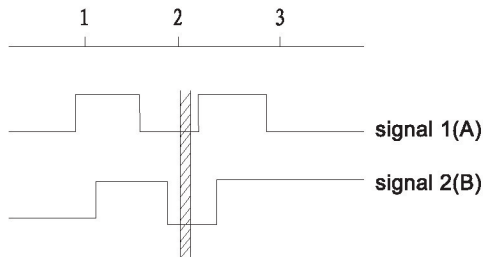


ISMM2080

ISMM1468

Output waveform

90° Output phase difference, CW rotation
(CW rotation as seen from fit surface)



A leads B clockwise when viewing the encoder shaft end.
Click-stop position falls within hatched area.

Terminal assignment

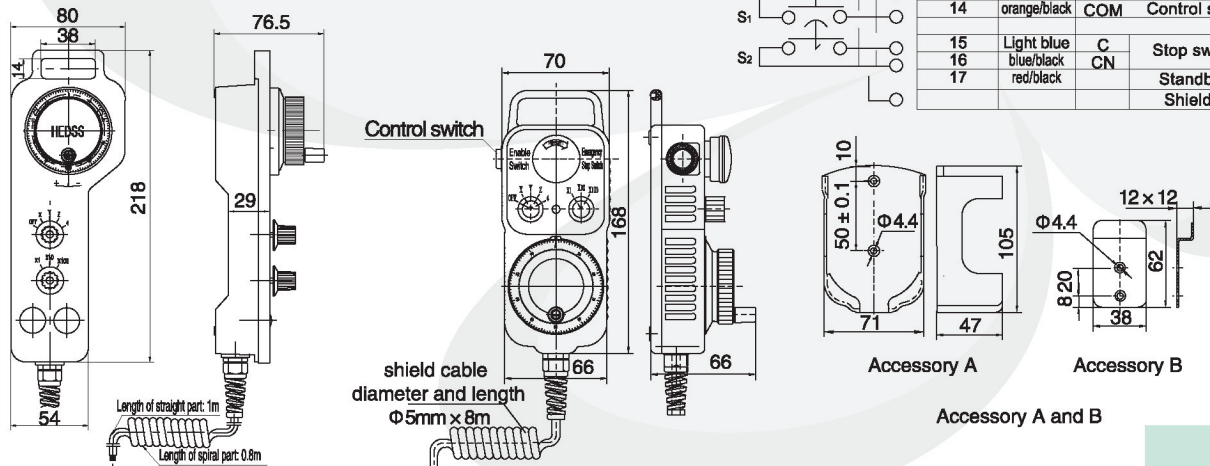
ELECTRICAL SPENFICATIONS OF SELECTION SWITCH			
Switch load	0.4VA	Max. voltage	25V
Circuit width	0.1-50mA		
ELECTRICAL SPENFICATIONS OF CONTROL SWITCH			
Connection Point	AC Max. load	AC220V 0.5A	
	DC Max. load	DC24V 1A	
ELECTRICAL SPENFICATIONS OF STOP SWITCH			
Connection Point	AC Max. load	AC220V 0.5A	
	DC Max. load	DC30V 1A	

Ordering code

ISMM1468	001	100	B	5	L
Series	Sequence Number	Number of Pulses	Output Signals	Supply Voltage	Output Circuit

Series: ISMM1468, Number of pulses: 100 p/r, Output signals: AB, Supply voltage: 5V DC, Output circuit: Line driver, Record: ISMM1468-001-100B-5L

Dimensions



◆ TECHNICAL SPECIFICATIONS

ELECTRICAL SPECIFICATIONS	
Output wave	Square wave
Output signals	A, B(Line driver output A, A, B, B phase)
Current consumption	≤100mA
Response Frequency	0~20KHz
Output phase difference	90° ± 45°
Supply voltage	5V DC, 12V DC
Signal level	$V_H \geq 85\%V_{CC}$, $V_L \leq 0.3V$
Number of pulses	100 (Other number of pulse available on request)
Output circuit	Open collector NPN, Push pull, Line driver, Voltage
MECHANICAL SPECIFICATIONS	
Signal position	2 kind
Speed without sealing	500rpm
Starting torque without sealing	$2.0 \times 10^{-2} \sim 6.0 \times 10^{-2} \text{Nm}$ (+25°C)
Shock resistance	980m/s ² , 6ms, 2 times each on XYZ
Vibration proof	50m/s ² , 10~200Hz, 2 hours each on XYZ
Working life	MTBF ≥ 10000h (+25°C, 2000rpm)
Weight	Appr. 740g
ENVIRONMENTAL SPECIFICATIONS	
Working humidity	30~85% (No condensation)
Storage temperature	-30°C~85°C
Working temperature	-10°C~70°C
Protection class	IP54

Item	Wire color	Signal	Note
1	red	+5V	Manual encoder
2	black	0V	
3	green	A	
4	white	B	
3 *	(purple	A	When line driver output
4 *	(purple/black	B	
5	green/black	+	Indicator lamp
6	white/black	-	
7	yellow	OFF	Select axis
8	yellow/black	X	
9	brown	Z	
10	brown/black	4	
9 *	(pink	5	When select the 5th, 6th axis
10 *	(pink/black	6	
11	gray	× 1	Select multiple
12	gray/black	× 10	
13	orange	× 100	
14	orange/black	COM	Control switch
15	Light blue	C	Stop switch
16	blue/black	CN	Standby
17	red/black		Shield